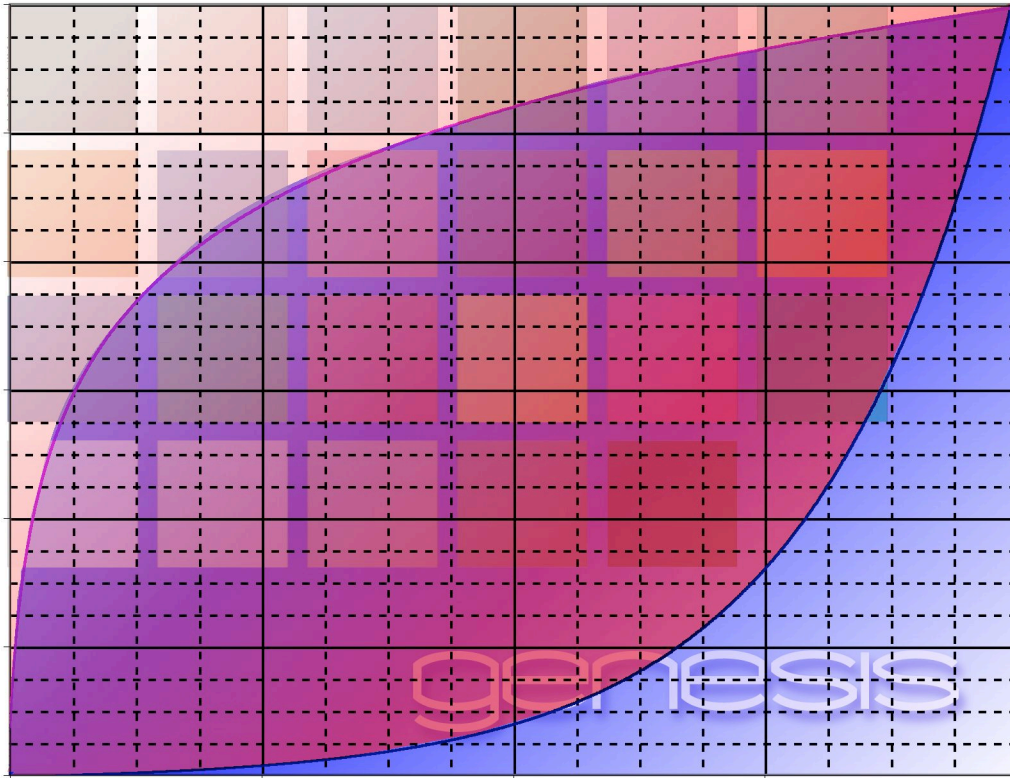


# PANAVISION

## Panalog After Effects Plugin



1<sup>st</sup> Edition Rev 1 (plugin version 1.2.2)

## **Copyright Information**

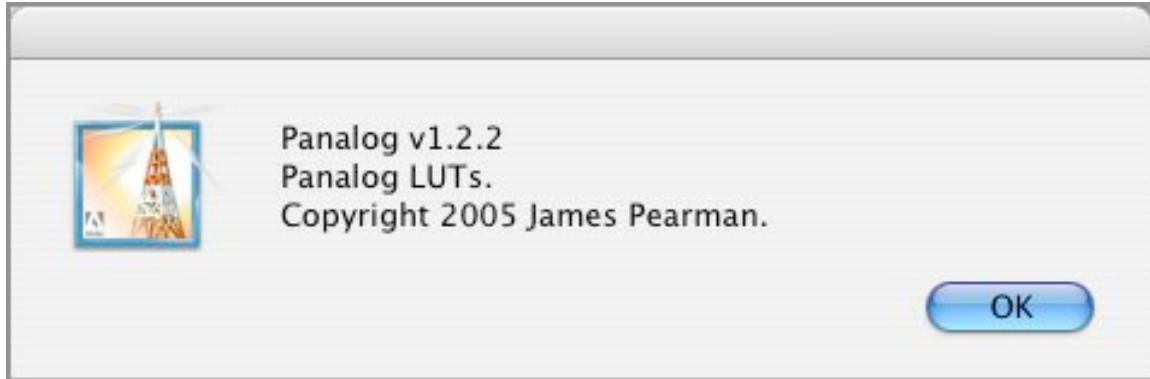
Copyright © 2005 Panavision Inc. All rights reserved. This document is not permitted to be distributed by anyone other than the employees of Panavision or its distributors. No part of this publication may be reproduced, transmitted, transcribed, stored in a retrieval system, or translated into any language in any form by any means without the prior written consent of Panavision. Prior written approval from Panavision must be obtained for any and all derivative works or aggregate works incorporating any of the information in this document, except as provided for under normal copyright law.

## **Disclaimer**

Information in this document is provided solely for the user's information and, while thought to be accurate, is provided strictly "as is" and without warranty of any kind, including liability or warranties relating to fitness for a particular purpose, merchantability, or infringement of any patent, copyright or other intellectual property right. Panavision reserves the right to revise this publication and to make changes from time to time in the content hereof without obligation to notify any person of such revisions or changes. Specifications are subject to change without notice.

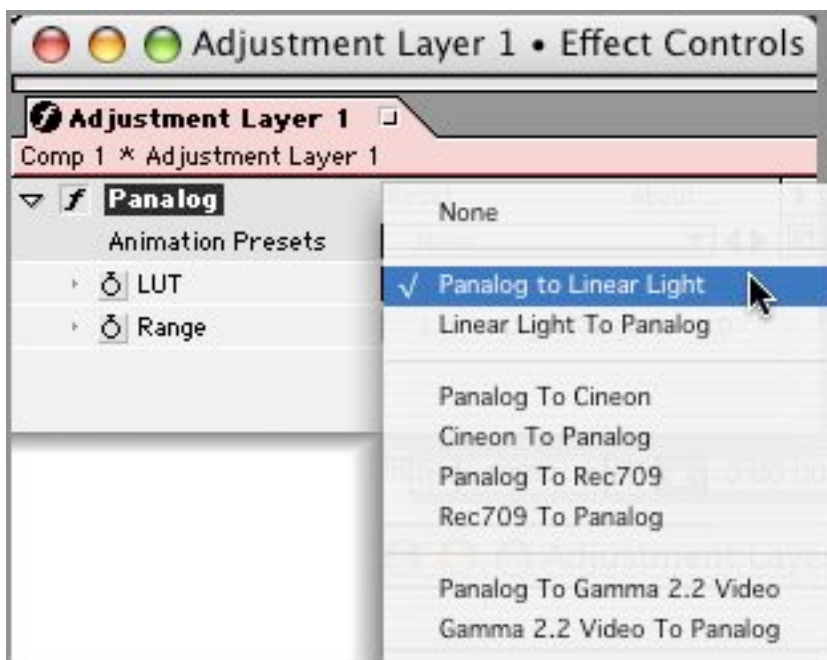
Panavision's obligations with respect to the products referenced herein are only as provided in Panavision's terms and conditions for rental. In no event shall Panavision, its employees or distributors be liable to you for any damages or losses, direct or indirect, arising from the use of any information contained in this document or the use of any products or services referenced within, or the information contained in, this manual.

## Adobe After Effects Plugin



The panalog plugin is an extension to Adobe After Effects that implements some of the panalog conversion functions. The plugin has been tested with After Effects version 6.5 and later, and is available for both Mac OSX and Win32 platforms. The plugin is placed in the After Effects "Plugins" folder and will appear in the effects menu. The effect is compatible with all project bit depths but it is not recommended to use 8bit projects as significant quantization will occur.

The effect is applied to an After Effects layer that is part of a composition. The desired conversion LUT (look up table) is selected from the pulldown menu. The following are available in the current version, V1.2.2



When converting from Panalog to or from Linear light, two conversion modes are available, these are selected using the range checkbox. When unchecked the linear light range is the normal panalog range of 0 – 6.0, this will generally mean that values above 1.0 will not be visible and in fact will be clipped when working with projects that are 16bit or less. 32bit projects will maintain values above 1.0 but these values will only be visible if the exposure effect is applied. Keying or other operations applied to the image will, however, be able to take advantage of these over bright values.

### Original Panalog Image



Panalog to Linear Light conversion selected.  
Range 0 – 1.0 unchecked, ie.normal 0 – 6.0 range is used.

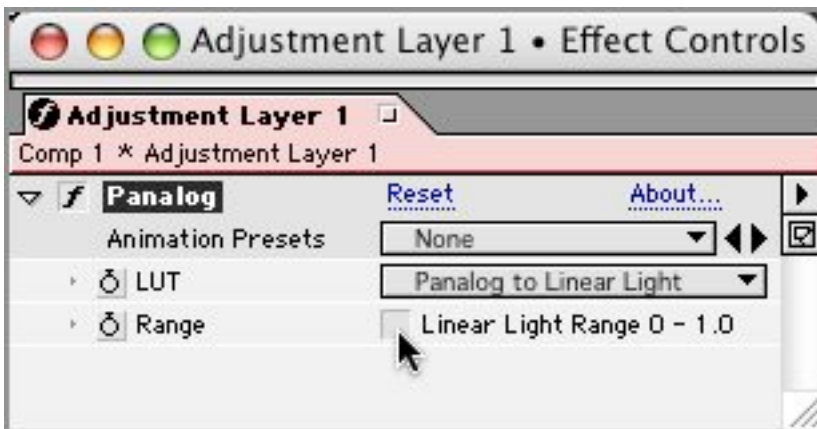
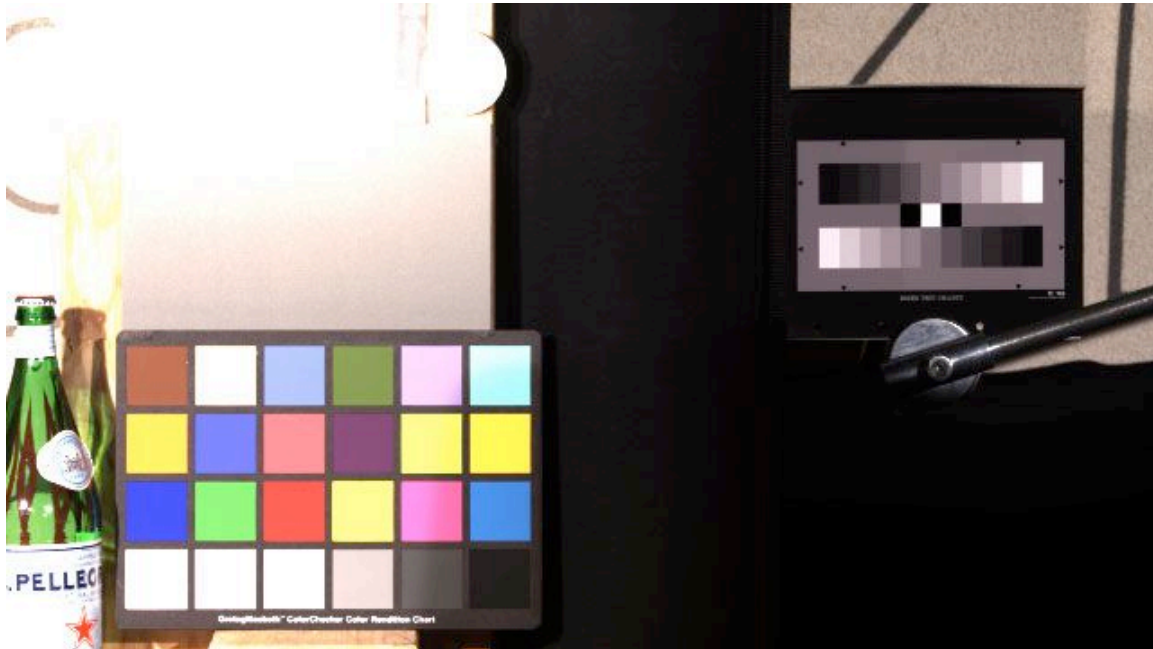


Image showing Panalog to Linear conversion with range set at 0 – 6.0



If the check box is checked then the linear light range will be rescaled into the range of 0 – 1.0. This allows all values to be visible and makes the conversion compatible with other commercially available effects such as eLin. White will have been scaled down to 0.1666 and the image will appear generally dark.

Panalog to Linear Light conversion selected.  
Range 0 – 1.0 Checked

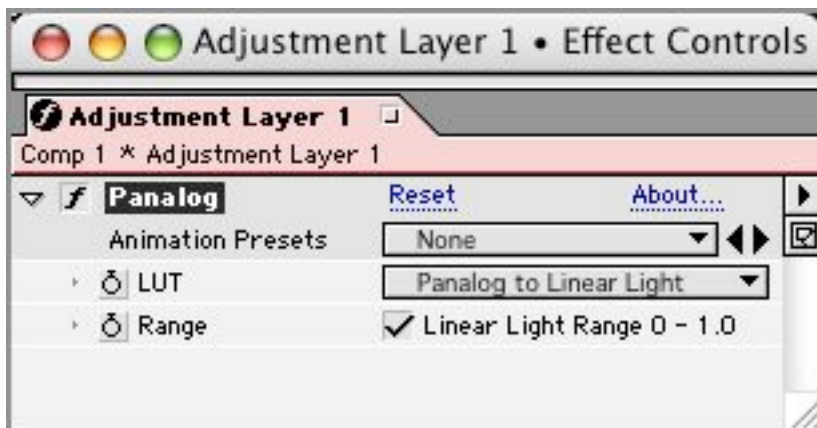
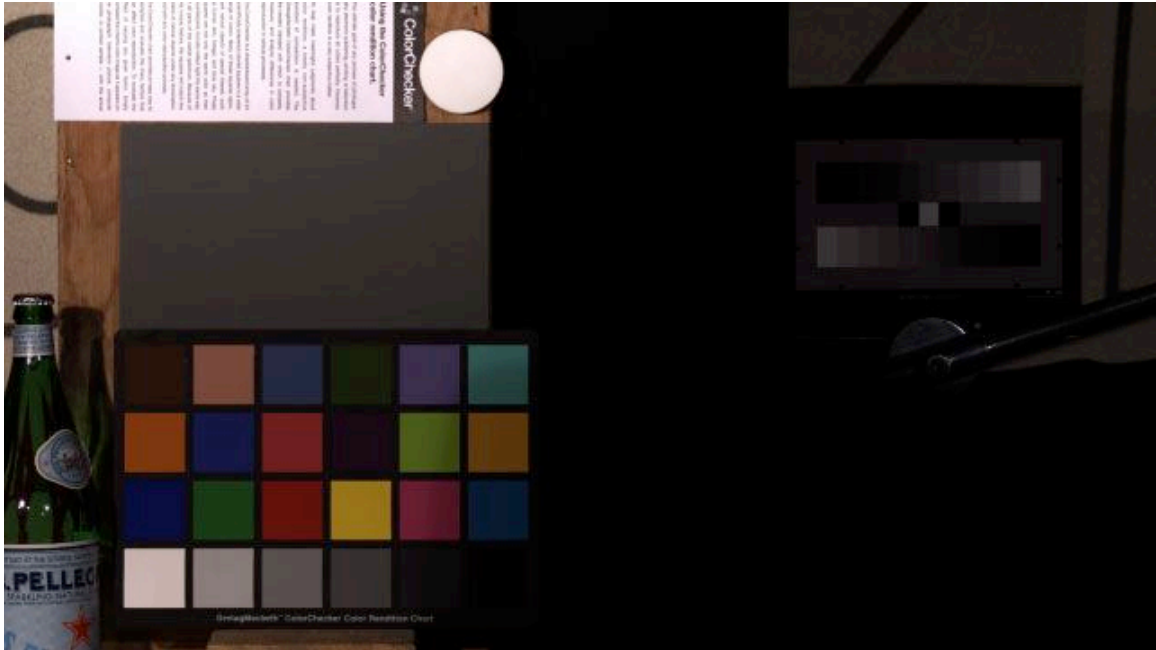
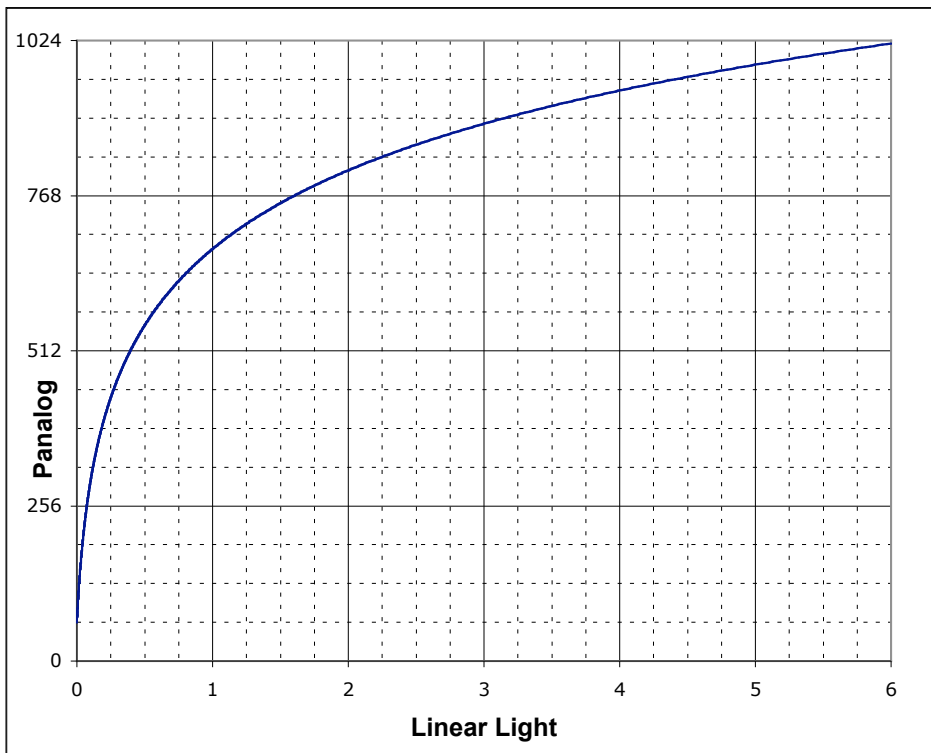
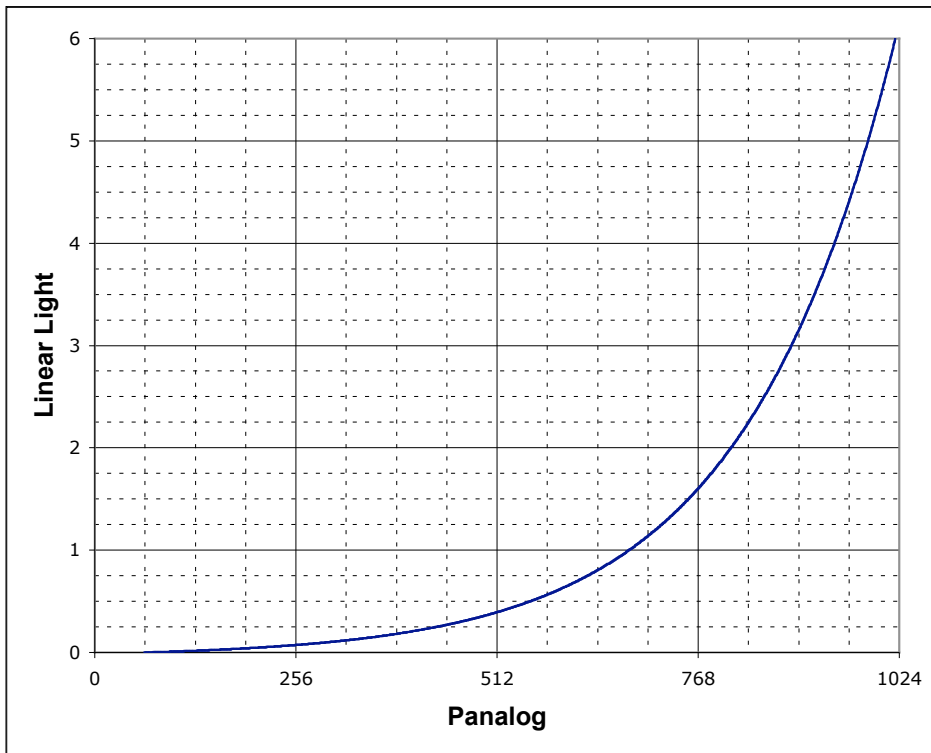


Image showing Panalog to Linear conversion with range set at 0 – 1.0

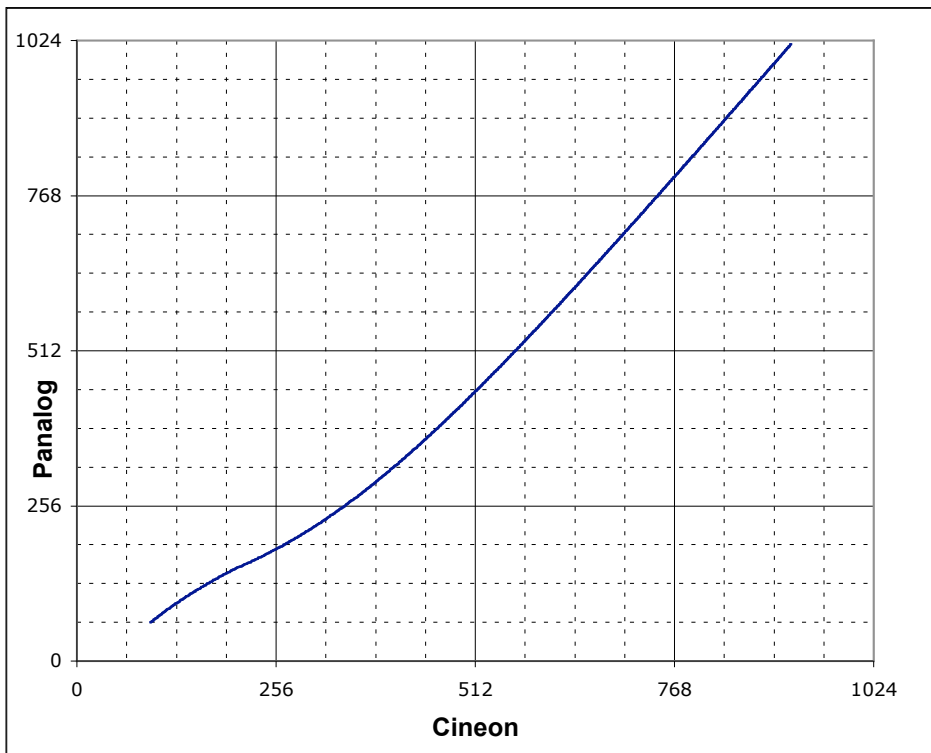
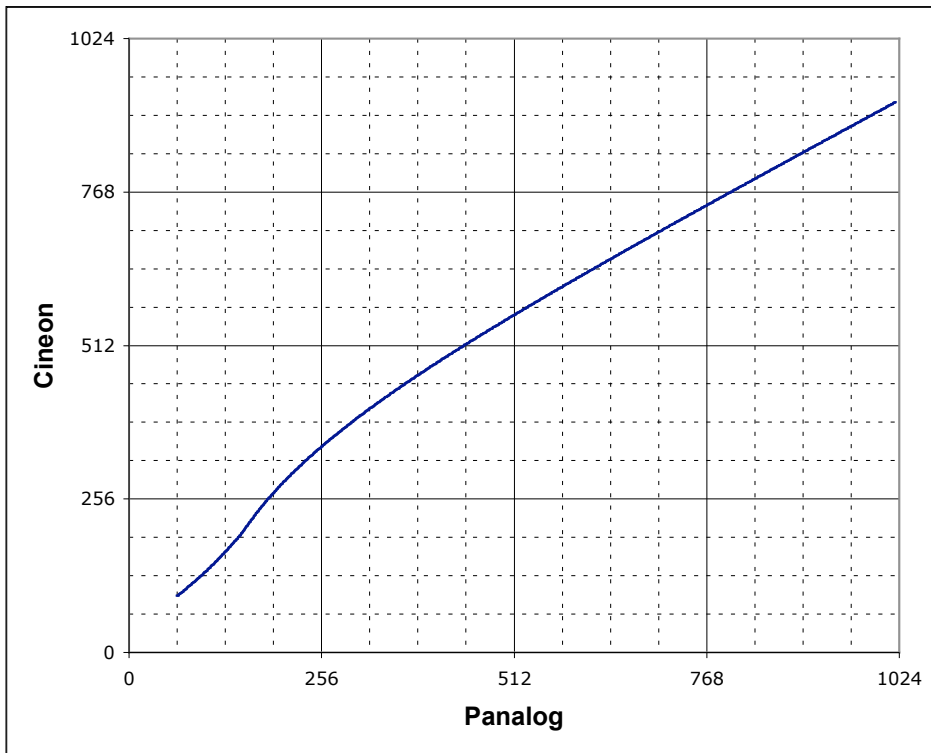


This mode will allow conversion to Linear Light and back to panalog without loss of data when working with 16bit projects.

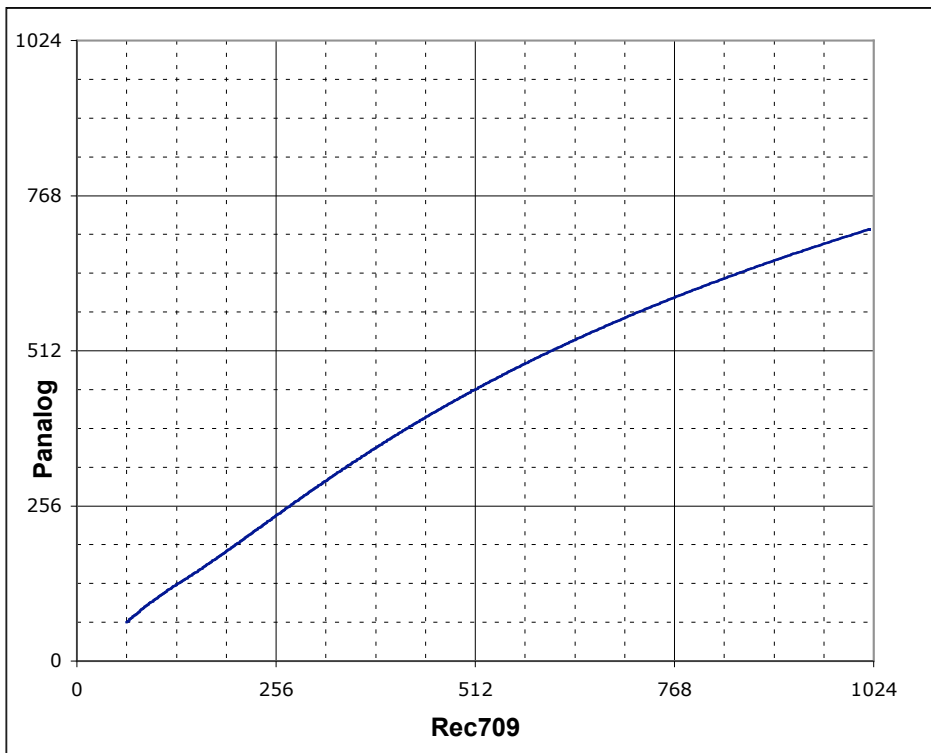
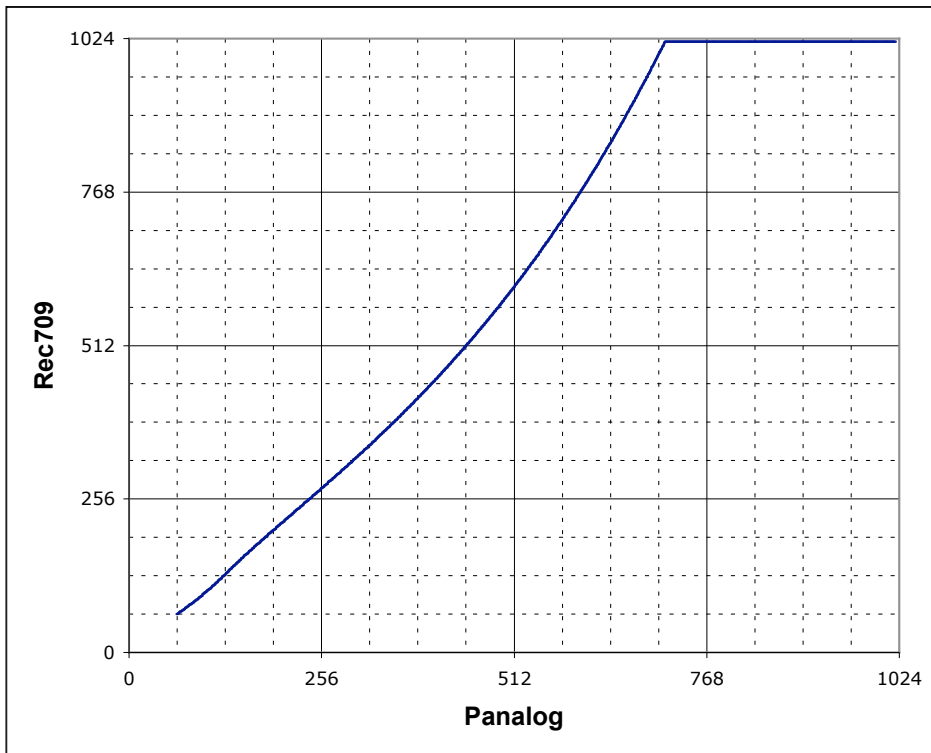
## Panalog to Linear Light transfer functions



## Panalog to Cineon transfer functions



## Panalog to Rec709 transfer functions



## Panalog to 2.2 Gamma corrected data transfer functions

